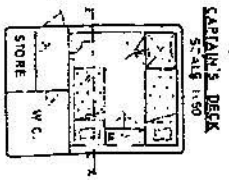
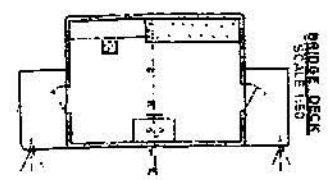
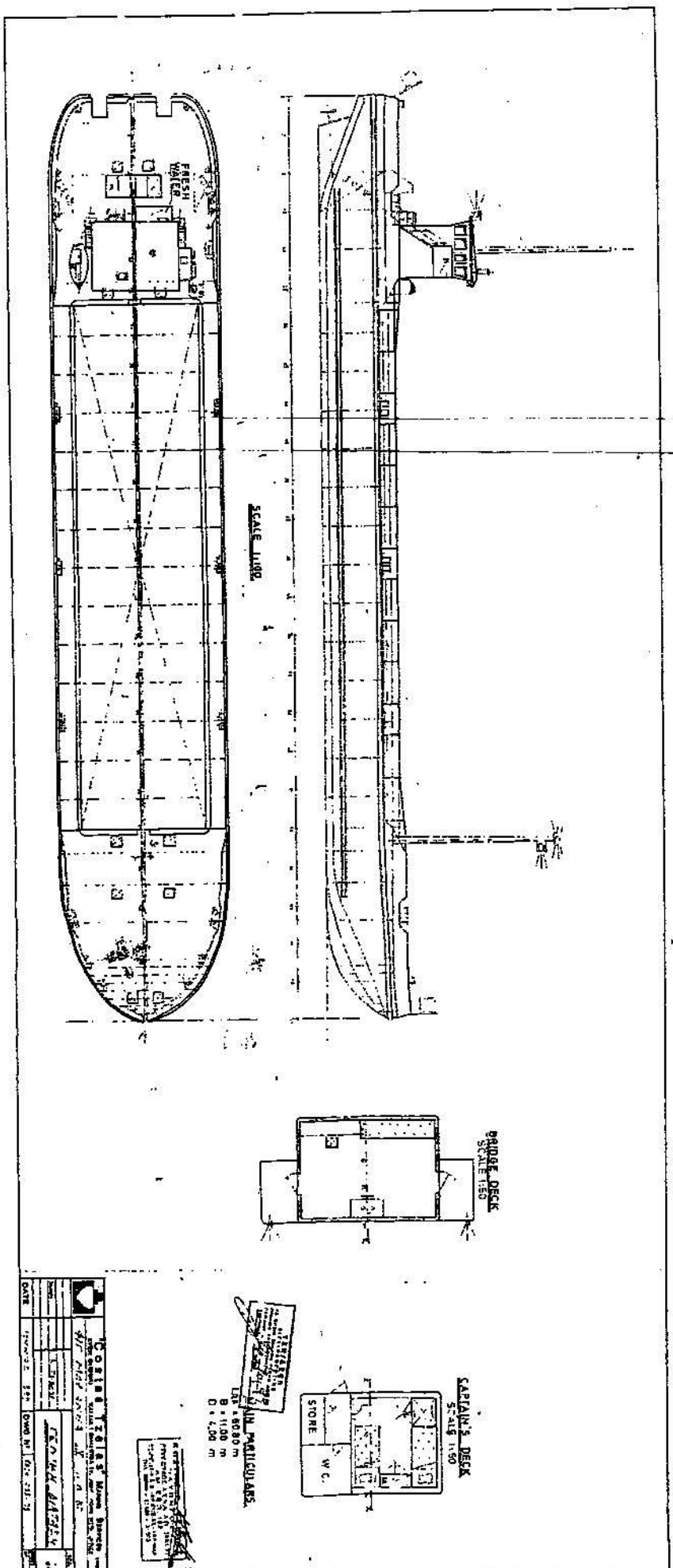


SPLIT BARGE : HARIANWA IX - SELF PROPELLED
 YEAR OF BUILT : 1987 REBUILT : 1999
 LEA : 60,30 | BEAM : 11,30 | HEIGHT : 3,93 m.
 CAPACITY : 1000 m³
 ENGINES : 2 x 408 = 816 BHP.



IN PARTICULARS
 LST = 8080 m
 B = 11,00 m
 D = 4,00 m

| | |
|---|---------------|
| COSSER TOLERS Marine Services and Engineering Ltd. 117, CHINESE STREET, SINGAPORE 05. TEL: 233 1111 FAX: 233 1111 | |
| DATE | 1999-02-18 |
| PROJECT NO. | 102-21-93 |
| SCALE | AS SHOWN |
| DESIGNER | COSSER TOLERS |
| CHECKED | |
| APPROVED | |