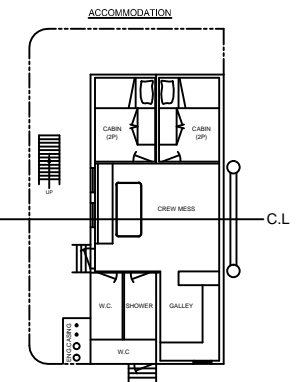
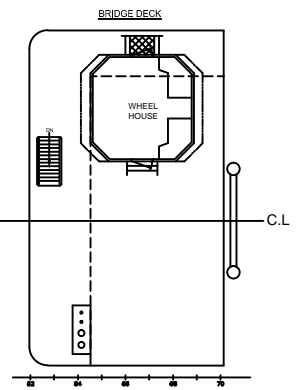
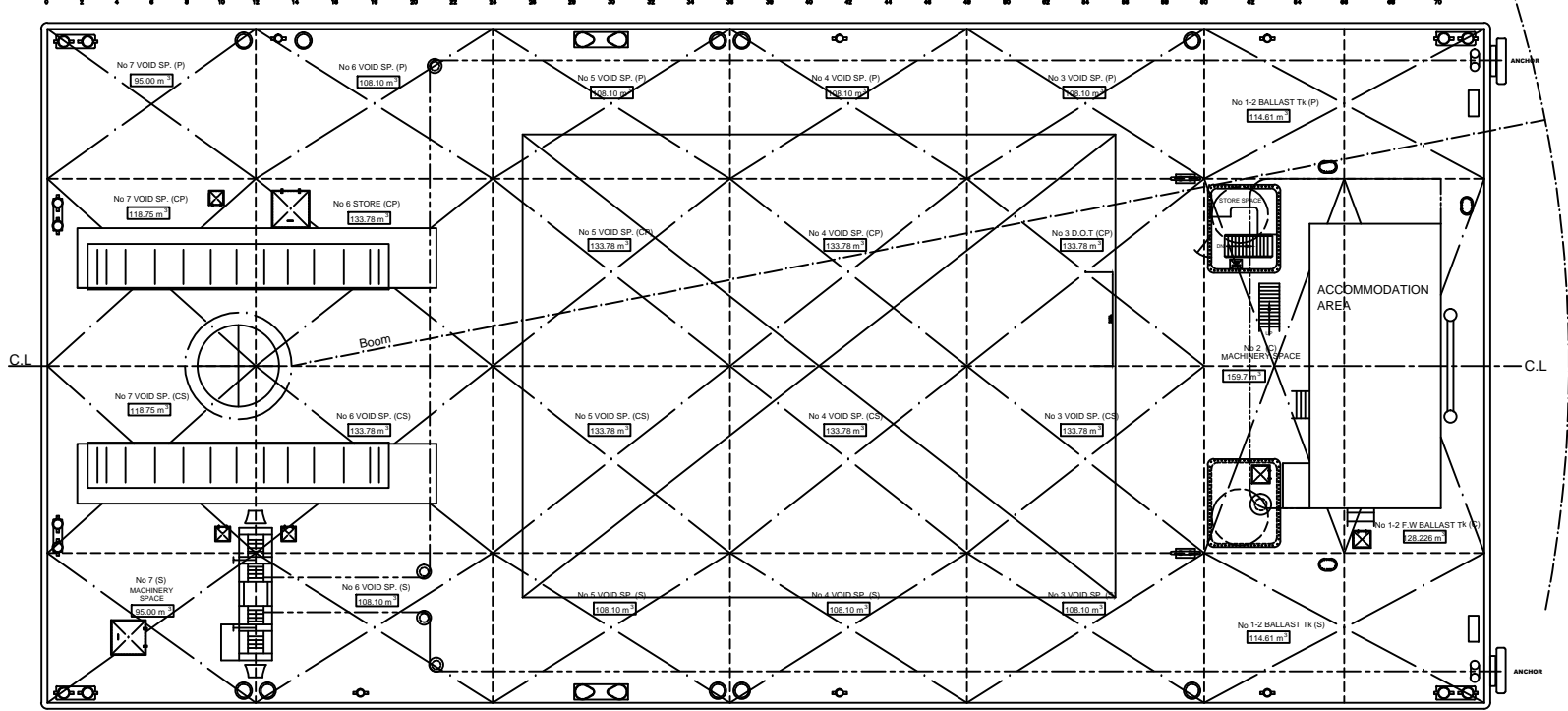


Crane model : AMERICAN 11310
 Boom length : 140' / 42.67
 Capacity : 203.6 MT Ton at 82 deg



ENGINES ARE USED FOR DPS (DYNAMIC POSITIONING SYSTEM) MOVERS OF SCHOTEL (360°) PROPELLERS (port & stbd)

DDO5AM
 4V222TH
 588 KW/1800 rpm



PRINCIPAL DIMENSIONS

Length (O.A.)	48.00 m
Breadth (m/d)	22.50 m
Depth (m/d)	2.73 m

AS FITTED

NO. SHEETS	2	NO. SHEETS	2
NO. 1	1	NO. 2	1
NO. 3	1	NO. 4	1
NO. 5	1	NO. 6	1
NO. 7	1	NO. 8	1
NO. 9	1	NO. 10	1
NO. 11	1	NO. 12	1
NO. 13	1	NO. 14	1
NO. 15	1	NO. 16	1
NO. 17	1	NO. 18	1
NO. 19	1	NO. 20	1
NO. 21	1	NO. 22	1
NO. 23	1	NO. 24	1
NO. 25	1	NO. 26	1
NO. 27	1	NO. 28	1
NO. 29	1	NO. 30	1
NO. 31	1	NO. 32	1
NO. 33	1	NO. 34	1
NO. 35	1	NO. 36	1
NO. 37	1	NO. 38	1
NO. 39	1	NO. 40	1
NO. 41	1	NO. 42	1
NO. 43	1	NO. 44	1
NO. 45	1	NO. 46	1
NO. 47	1	NO. 48	1
NO. 49	1	NO. 50	1
NO. 51	1	NO. 52	1
NO. 53	1	NO. 54	1
NO. 55	1	NO. 56	1
NO. 57	1	NO. 58	1
NO. 59	1	NO. 60	1
NO. 61	1	NO. 62	1
NO. 63	1	NO. 64	1
NO. 65	1	NO. 66	1
NO. 67	1	NO. 68	1
NO. 69	1	NO. 70	1
NO. 71	1	NO. 72	1
NO. 73	1	NO. 74	1
NO. 75	1	NO. 76	1
NO. 77	1	NO. 78	1
NO. 79	1	NO. 80	1
NO. 81	1	NO. 82	1
NO. 83	1	NO. 84	1
NO. 85	1	NO. 86	1
NO. 87	1	NO. 88	1
NO. 89	1	NO. 90	1
NO. 91	1	NO. 92	1
NO. 93	1	NO. 94	1
NO. 95	1	NO. 96	1
NO. 97	1	NO. 98	1
NO. 99	1	NO. 100	1
NO. 101	1	NO. 102	1
NO. 103	1	NO. 104	1
NO. 105	1	NO. 106	1
NO. 107	1	NO. 108	1
NO. 109	1	NO. 110	1
NO. 111	1	NO. 112	1
NO. 113	1	NO. 114	1
NO. 115	1	NO. 116	1
NO. 117	1	NO. 118	1
NO. 119	1	NO. 120	1
NO. 121	1	NO. 122	1
NO. 123	1	NO. 124	1
NO. 125	1	NO. 126	1
NO. 127	1	NO. 128	1
NO. 129	1	NO. 130	1
NO. 131	1	NO. 132	1
NO. 133	1	NO. 134	1
NO. 135	1	NO. 136	1
NO. 137	1	NO. 138	1
NO. 139	1	NO. 140	1
NO. 141	1	NO. 142	1
NO. 143	1	NO. 144	1
NO. 145	1	NO. 146	1
NO. 147	1	NO. 148	1
NO. 149	1	NO. 150	1
NO. 151	1	NO. 152	1
NO. 153	1	NO. 154	1
NO. 155	1	NO. 156	1
NO. 157	1	NO. 158	1
NO. 159	1	NO. 160	1
NO. 161	1	NO. 162	1
NO. 163	1	NO. 164	1
NO. 165	1	NO. 166	1
NO. 167	1	NO. 168	1
NO. 169	1	NO. 170	1
NO. 171	1	NO. 172	1
NO. 173	1	NO. 174	1
NO. 175	1	NO. 176	1

NEW HELLENIC SHIPYARDS S.A.

1980, Saronis - Greece
 Tel: +30 210 9612024, 9612651, 9617900
 Fax: +30 210 9600000
 Email: info@newhellenic.com
 Website: www.newhellenic.com

Project Name: Floating Crane "IGNATIUS III"

Scale: 1:75

Drawn by: S. Marinis
 Checked by: N. Marinis
 Date: Novem. 2016

GENERAL ARRANGEMENT PLAN