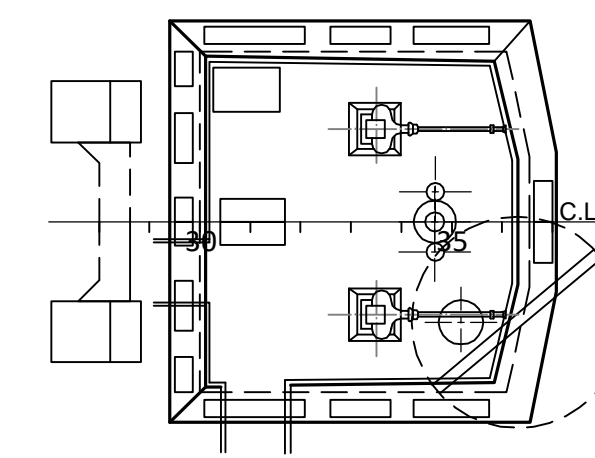
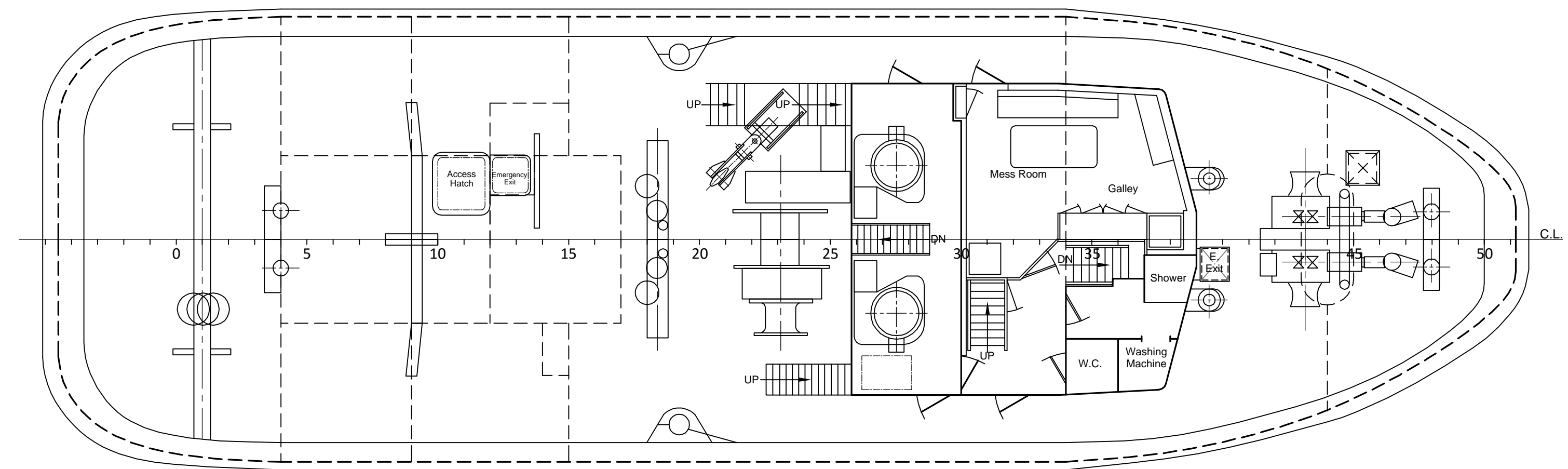


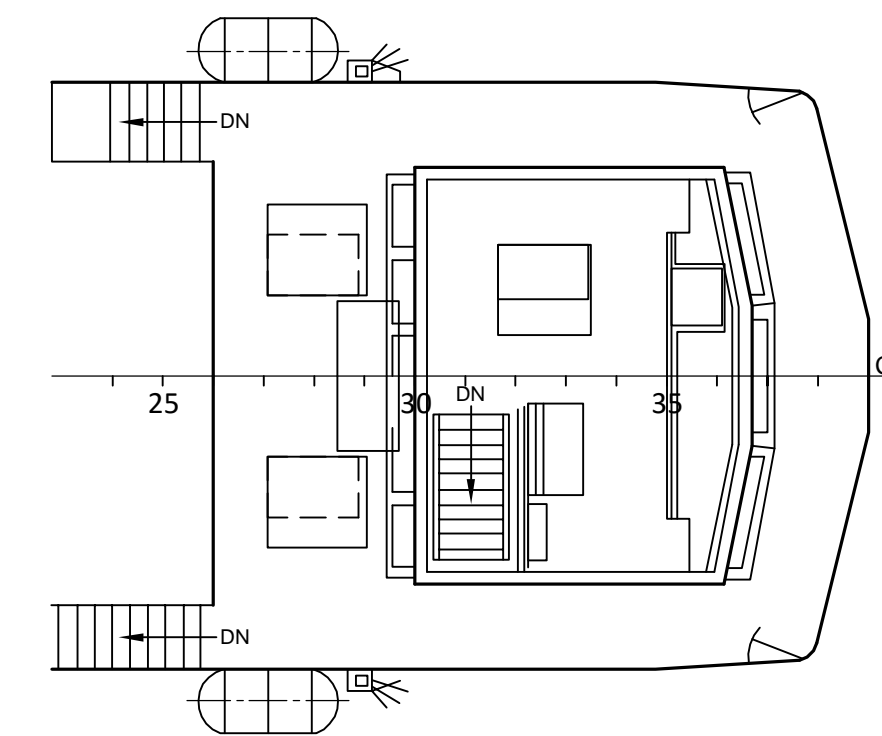
TOP BRIDGE DECK



MAIN DECK



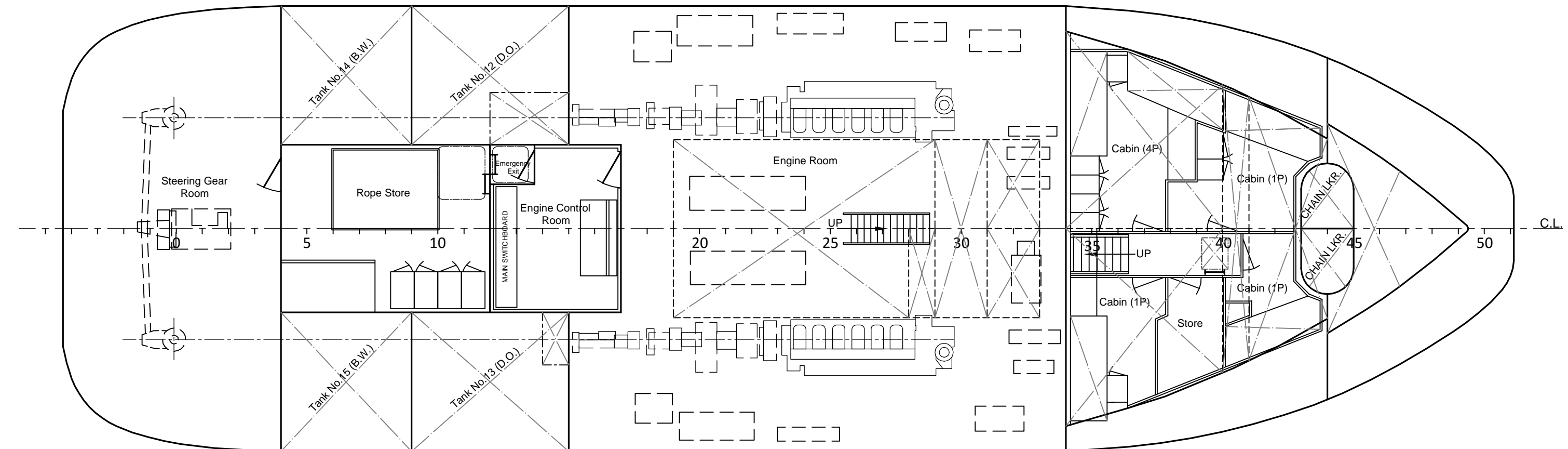
BRIDGE DECK



PRINCIPAL CHARACTERISTICS

Length O.A.	28.40	m
Length B.P.	25.00	m
Breadth(mld)	8.50	m
Depth(mld)	4.20	m
Summer Draft (extr.)	3.25	m
Displacement	416.37	m.t.
Gross Tonnage	194	
Net Tonnage	58	
Year of Build	1981	

LOWER VIEW



NEW HELLENIC SHIPYARDS S.A.		4	
Vasil Pavlou, Impromis		3	
18902, Salamina - Greece		2	
Tel: +30 210 4670224-4674555, 4677990		1	
Fax: +30 210 4620864			
E-mail: info@newhellenic-ships.com			
www.newhellenic-ships.com			
Vessel's Name: Tug "CHRISTOS XXXX" - IMO No. 8012011			
Cast / Cam by:	Date:	File:	Project Number:
N.H.A.	January 2017		T 176
Checked by:	Date:	GENERAL ARRANGEMENT PLAN	
N.H.A.	January 2017	Drawing Number: 0117-176-02	
		Scale: 1:75	

GLOBAL COPYRIGHT © THIS DRAWING IS CONFIDENTIAL AND MUST NOT BE COPIED, REPRODUCED ELECTRONICALLY, ALTERED, STORED OR UTILISED IN ANY WAY OR TRANSMITTED TO ANY THIRD PARTY, WITHOUT THE WRITTEN PERMISSION OF NEW HELLENIC SHIPYARDS S.A.