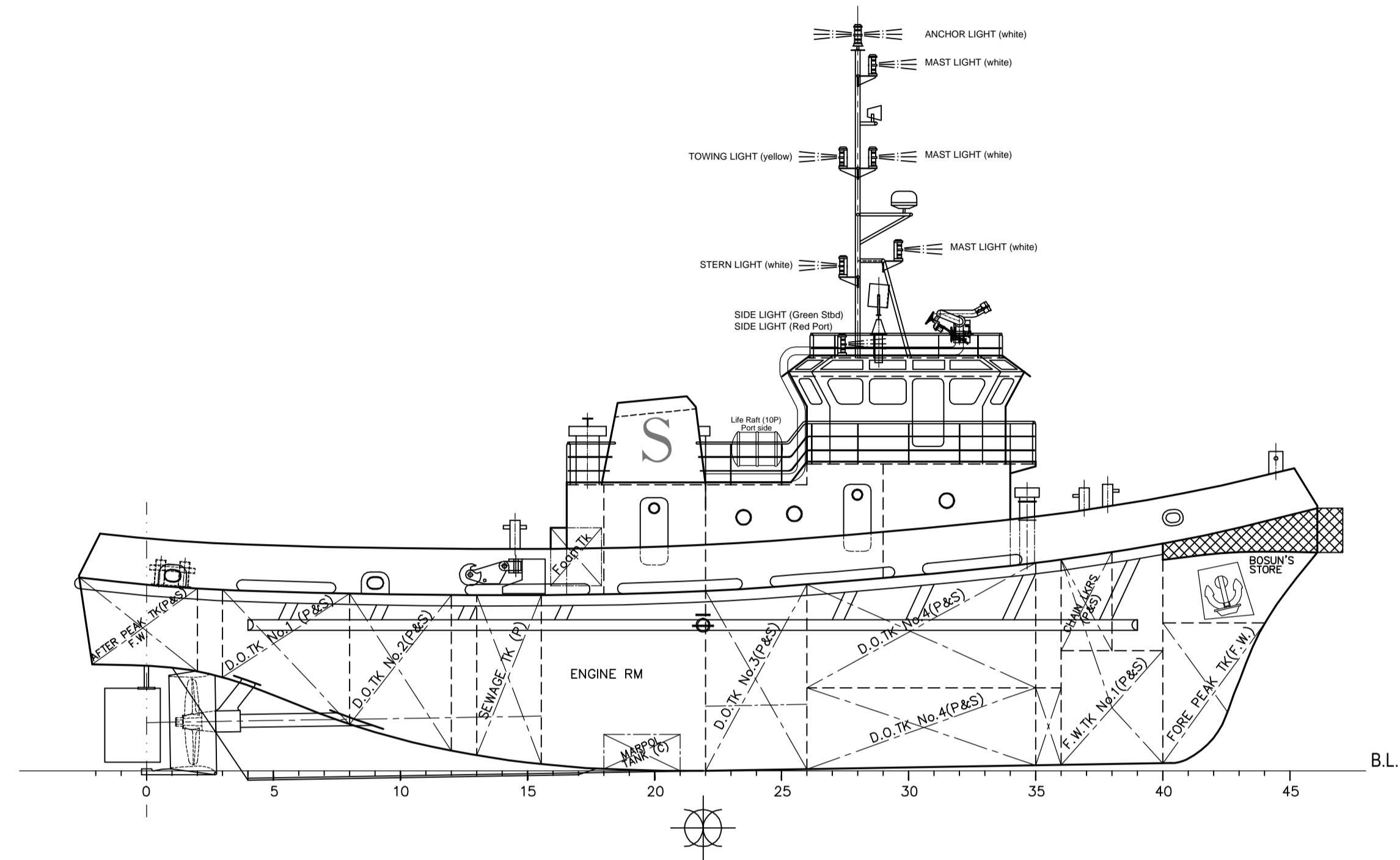
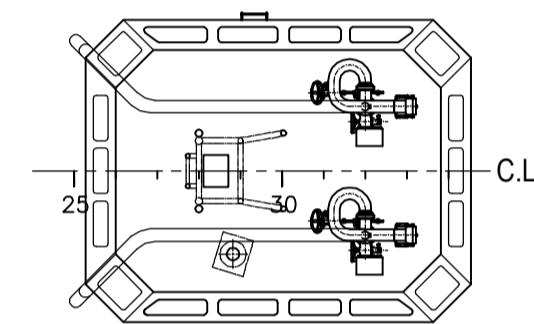


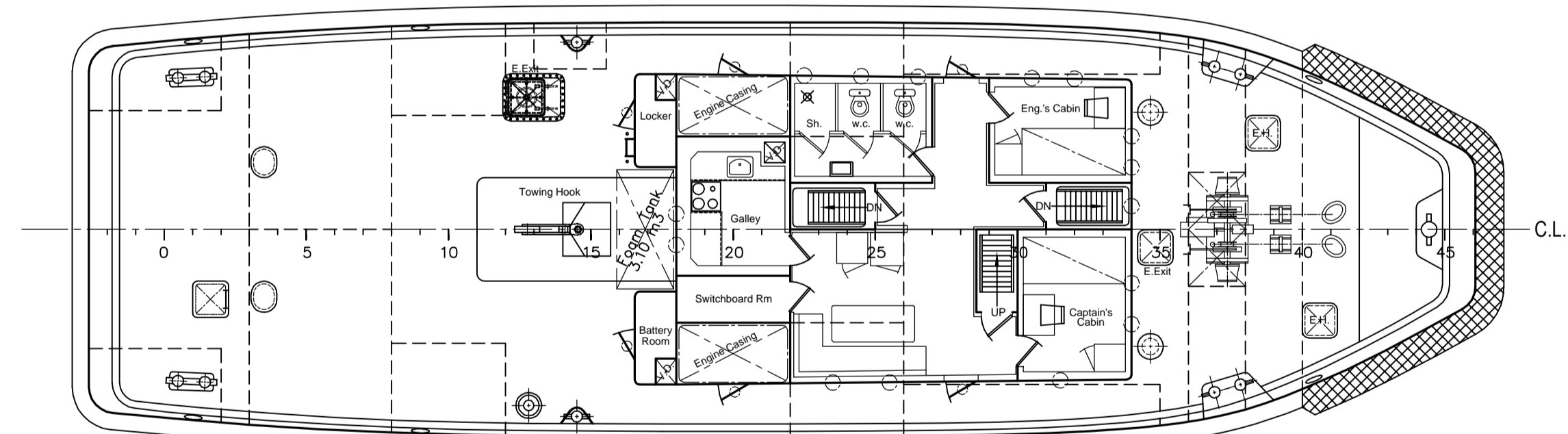
GENERAL ARRANGEMENT PLAN



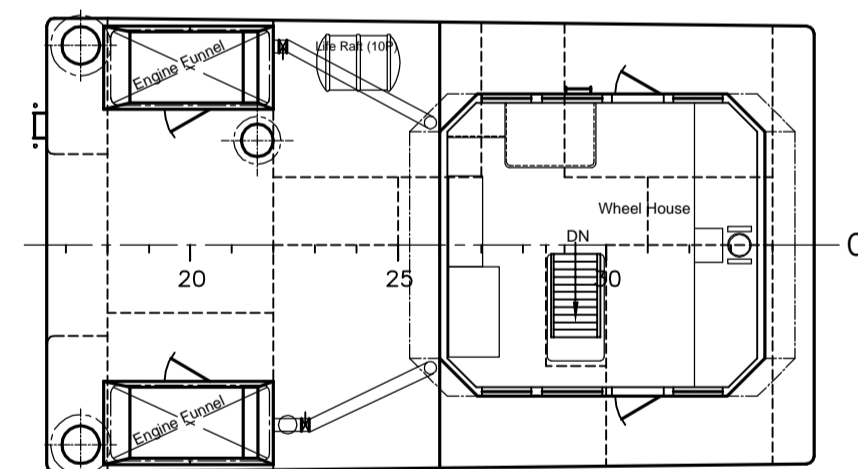
COMPASS DECK



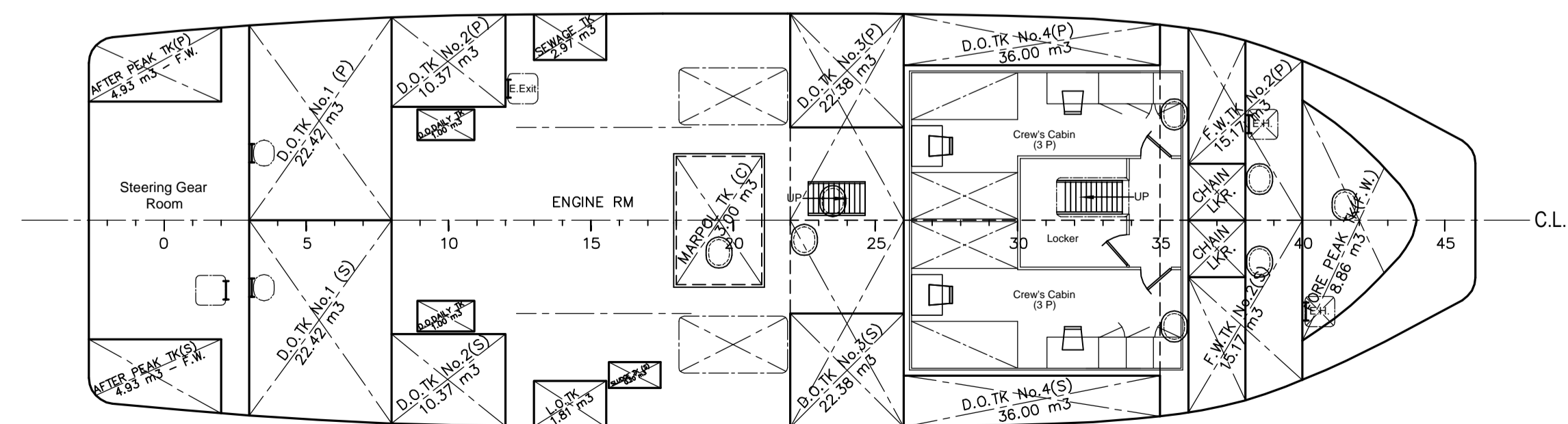
MAIN DECK



NAVIGATION DECK



VIEW BELOW MAIN DK



PRINCIPAL DIMENSIONS

Length O.A.	26.80	m
Length B.P.	24.10	m
Breadth(mld)	8.00	m
Depth to Main Dk(mld)	3.80	m
Draft (ext)	3.16	m
Displacement	429.52	t
Year of Build	2000	
Frame Spacing	0.55	m

NIKOLAOS CH. ALVANOS
 NAVAL ARCHITECT - MARINE ENGINEER
 CERT. No. 16/3 - M.S.I. Reg. No. 314

NEW HELLENIC SHIPYARDS S.A. Kato Pounta, Ampelakia 18902, Salamis - Greece Tel. +30 210 4670224, 4674555, 4677590 Fax. +30 210 4620864 e-mail: info@spanopoulos-group.com www.spanopoulos-group.com		4	
Vessel's Name: Tug "CHRISTOS XXXVII" - IMO No. 9227120		3	
Cad / Cam by: N.H.A.		2	
Date: March 2016	Title: GENERAL ARRANGEMENT PLAN	1	
Checked by: N.H.A.	Date: March 2016	A/A	Revisions
Project Number: T 172		Date:	
Drawing Number: 0316-172-03		Scale: 1:100	

GLOBAL COPYRIGHT © THIS DRAWING IS CONFIDENTIAL AND MUST NOT BE COPIED, REPRODUCED ELECTRONICALLY, ALTERED, STORED OR UTILISED IN ANY WAY OR EXHIBITED TO ANY THIRD PARTY, WITHOUT THE WRITTEN PERMISSION OF NEW HELLENIC SHIPYARDS S.A.