

# GENERAL ARRANGEMENT PLAN

## 3353 BHP OCEAN TUG

scale : 1 : 100

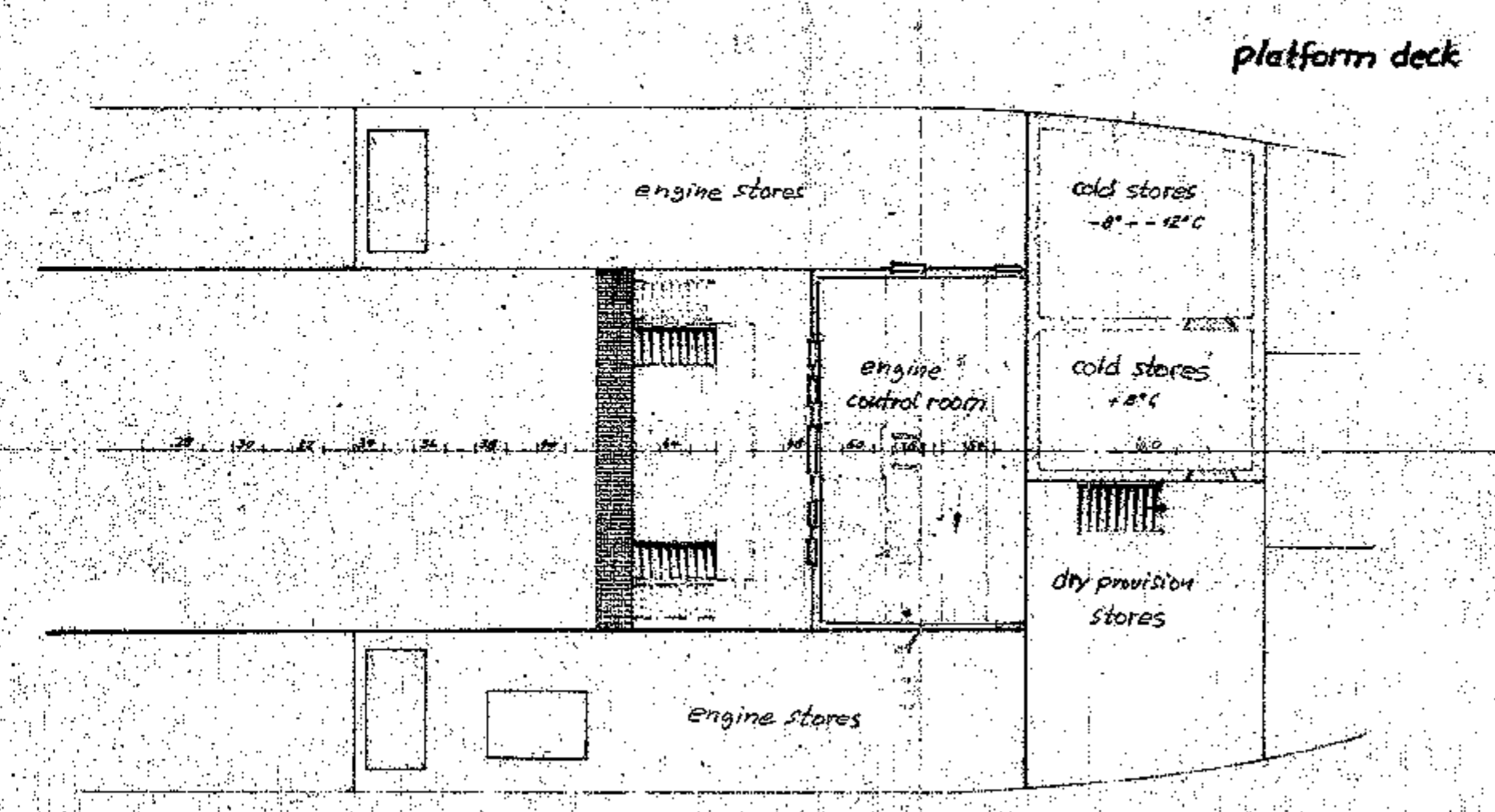
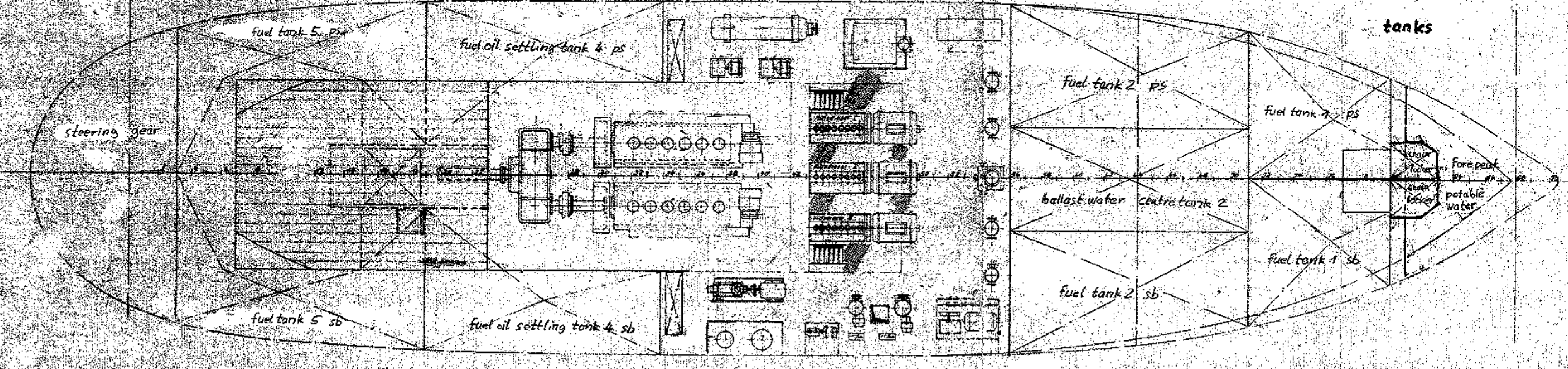
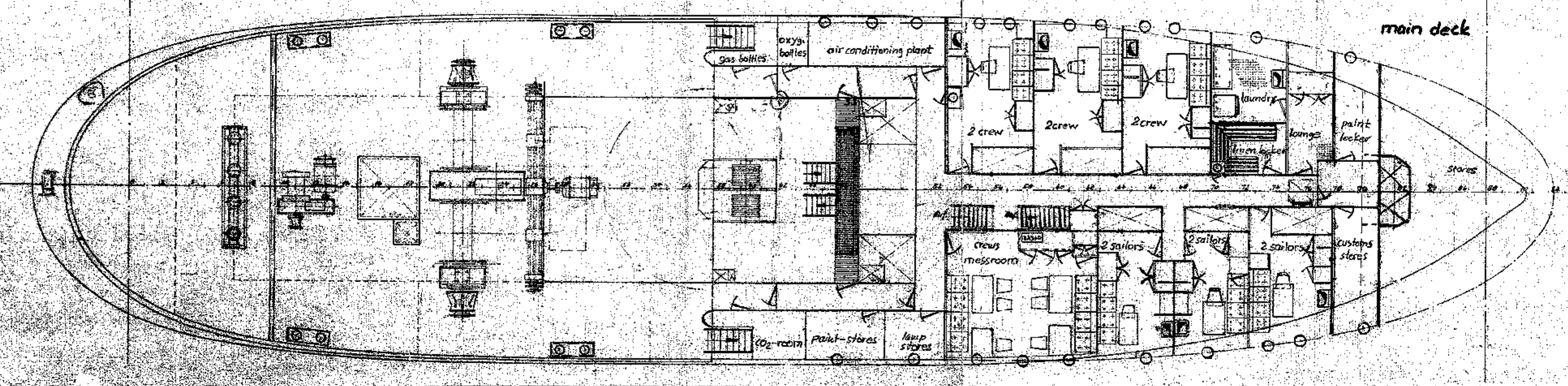
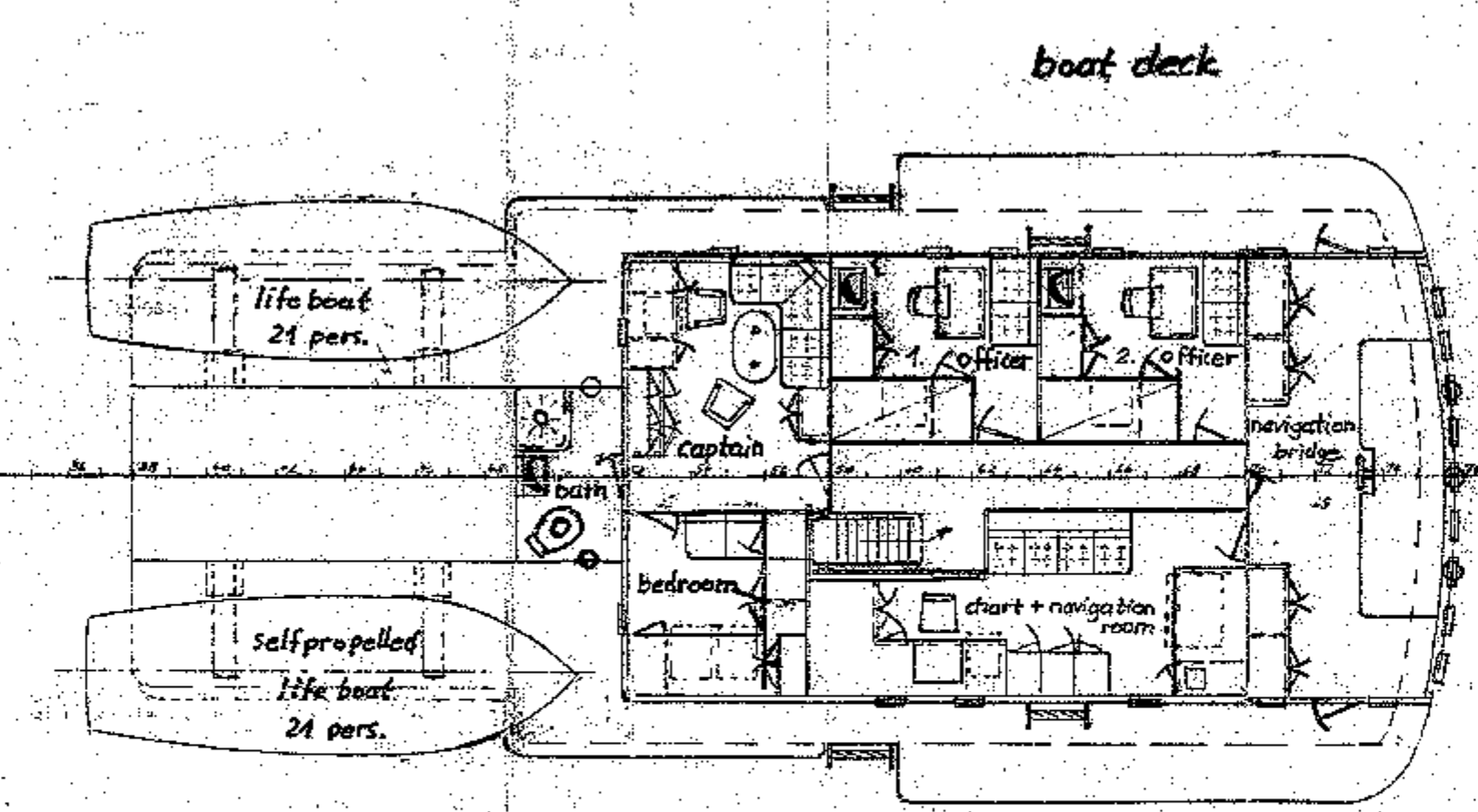
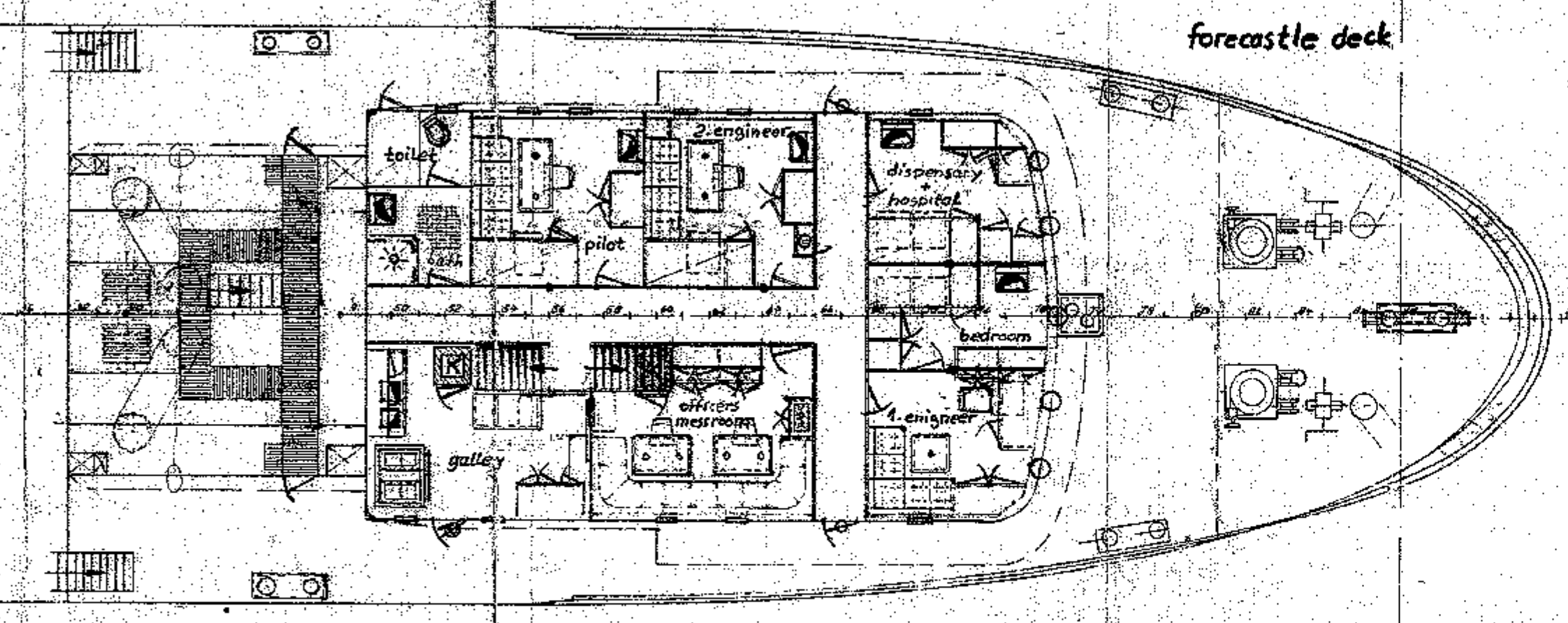
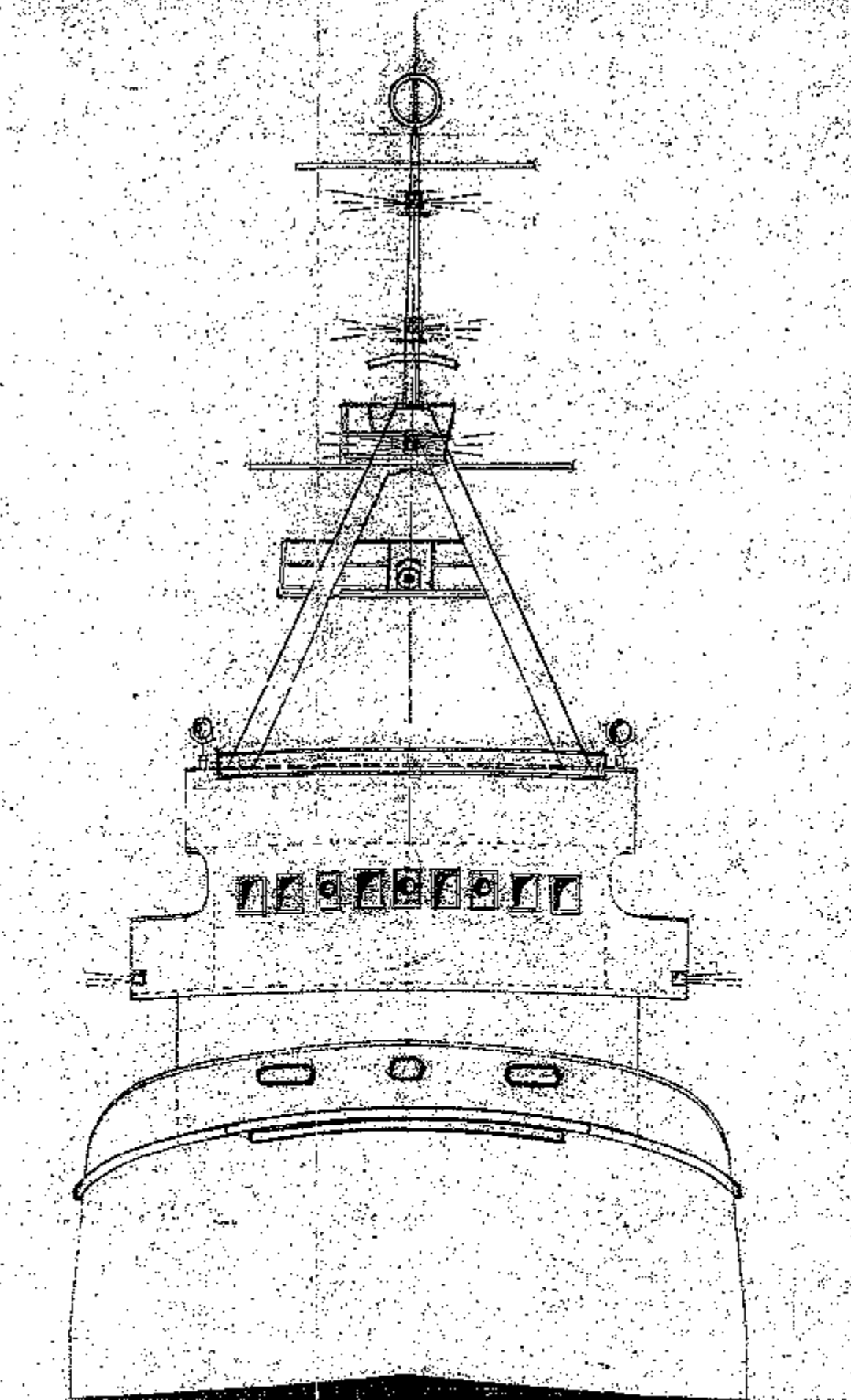
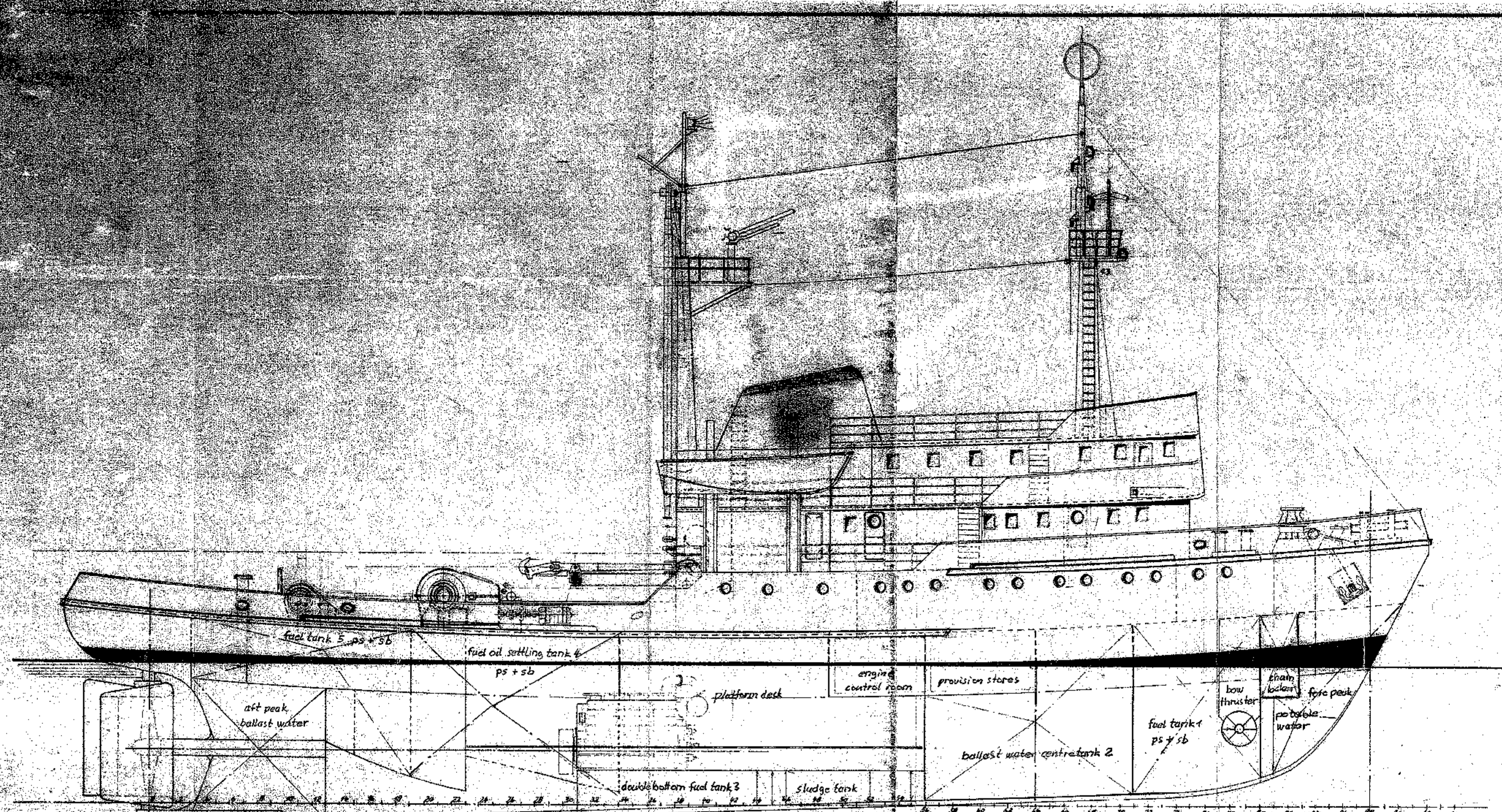
class : GERMANISCHER LLOYD

principal dimensions :

length over all ..... 50,00 m  
 length between perpendiculars ..... 44,00 m  
 moulded breadth ..... 11,30 m  
 height to forecastle deck ..... 8,40 m  
 height to main deck ..... 6,10 m  
 design draught ..... 5,10 m

bollard pull ..... 60,0 tons

speed ..... 14,0 knots



fuel total capacity : 615,2 tons	
fuel tank 5 ps	frame 3 - 19
fuel tank 5 sb	frame 3 - 19
fuel oil settling tank 4 ps	frame 19 - 34
fuel oil settling tank 4 sb	frame 19 - 34
double bottom fuel tank 3 sb	frame 31 - 44
double bottom fuel tank 3 ps	frame 31 - 44
fuel tank 2 ps	frame 56 - 71
fuel tank 2 sb	frame 56 - 71
fuel tank 1 ps	frame 71 - 80
fuel tank 1 sb	frame 71 - 80
fuel oil leakage tank sb	frame 44 - 45
sludge tank centre	frame 46 - 52

ballast water total capacity : 142,0 tons	
ballast water aft peak	frame 3 - 13
ballast water centre tank	frame 56 - 71

potable water total capacity : 57,0 tons	
potable water tank ps	frame 46 - 55
potable water tank sb	frame 46 - 55
potable water tank fore peak	frame 81 - 91

sludge tank centre	frame 46 - 52
bilge water tank ps	frame 44 - 45

**YARD NUMBER 1752**

F. Schichau GmbH  
Bremerhaven

drawing - no.: SO / 100